

BOARD AGENDA ITEM

January 23, 2018

SUBJECT:

Recommendation to adjust elementary and high school attendance boundaries in Area One

BACKGROUND:

Administration recommends adjusting elementary and high school attendance lines between J.D. Lever Elementary School, North Aiken Elementary School, Aiken Elementary School, Oakwood Windsor Elementary School, East Aiken School of the Arts, Chukker Creek Elementary School, Millbrook Elementary School, Aiken High School and South Aiken High School. Adjustments include a grandfathering provision for current attendees and would begin with the 2018-19 school year. Attendance areas are succinctly defined in Map Attachments F and G.

ADMINISTRATIVE CONSIDERATION:

Comprehensive internal and external demographic, population, and utilization studies confirm that Area One elementary schools are significantly out of balance with regard to building utilization and the demographic make-up of student populations. It is also apparent that no distinct feeder pattern exists from elementary through high school. This recommendation considers current utilization as well as anticipated population growth to address those imbalances and create a direct feeder pattern. Students zoned for J.D. Lever Elementary School, North Aiken Elementary School, Aiken Elementary School would be part of the Aiken High School pattern. Students zoned for Oakwood Windsor Elementary School, East Aiken School of the Arts, Chukker Creek Elementary School, Millbrook Elementary School would be part of the South Aiken High School pattern.

RECOMMENDATION:

Approve the recommendation to adjust elementary and high school attendance boundaries in Area One.

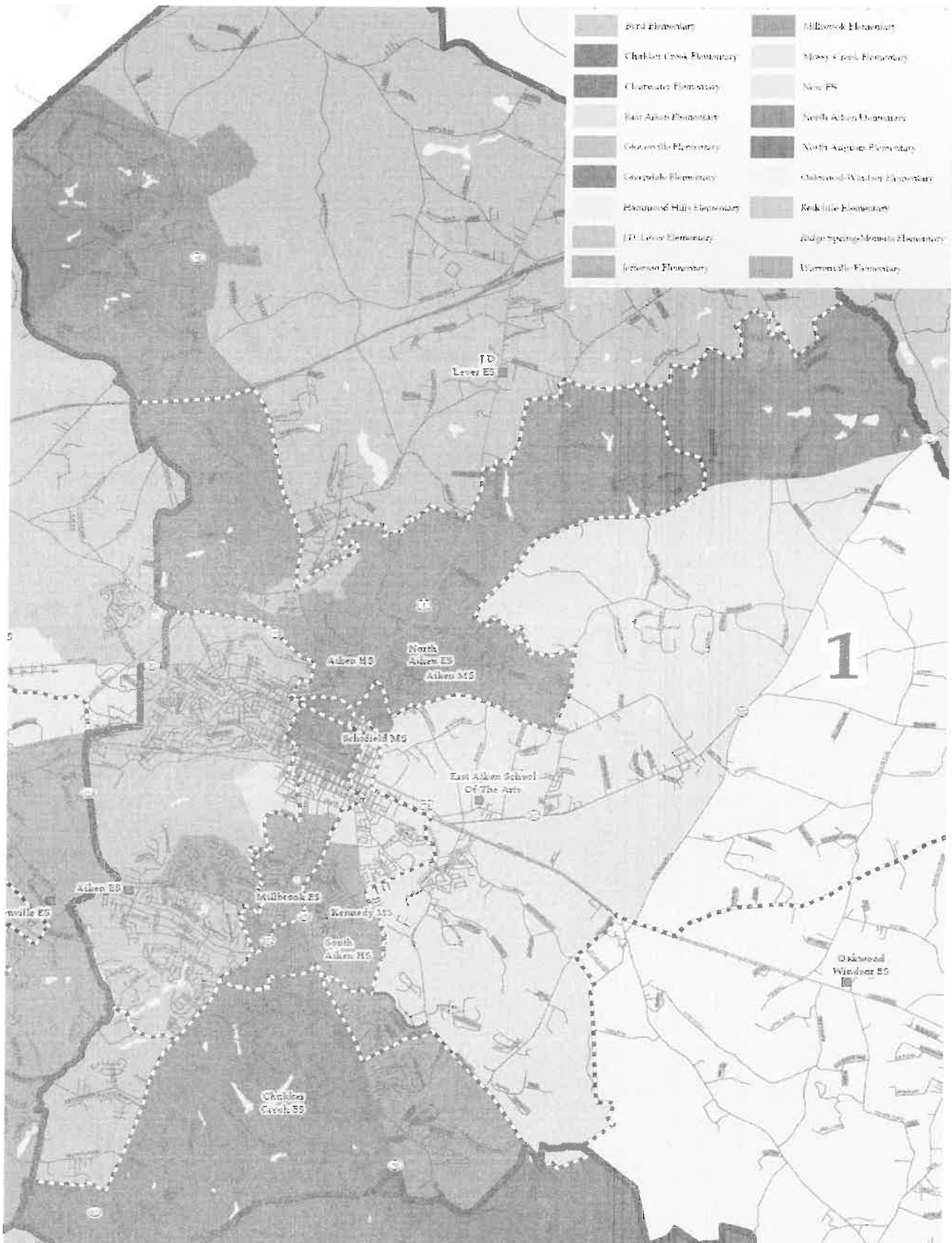
ATTACHMENT:

Map Attachments F and G

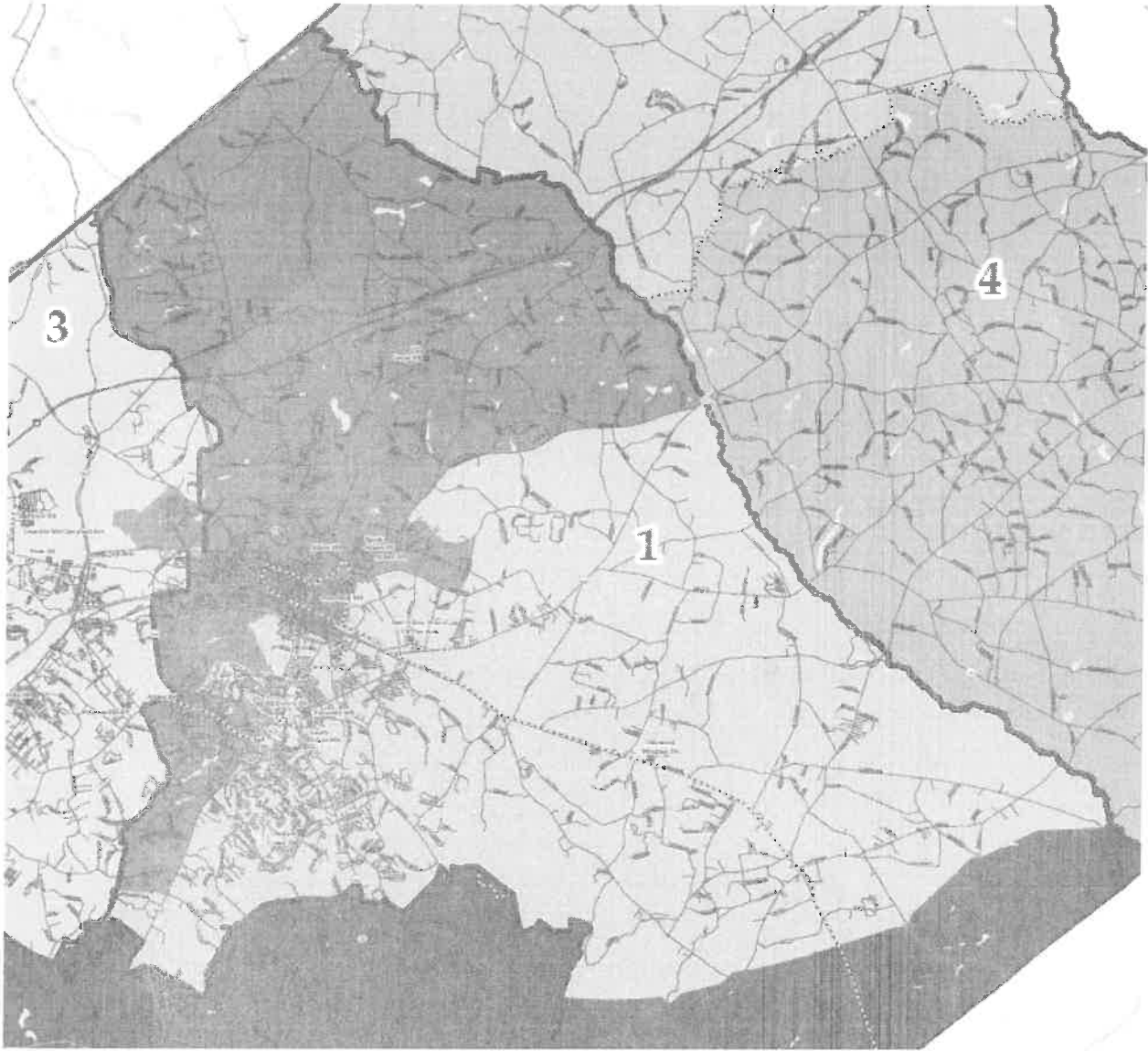
PREPARED BY:

Sean Alford
King Laurence

MAP ATTACHMENT F
Area 1 Elementary Schools



MAP ATTACHMENT G
Area One High Schools



Aiken High



South Aiken High