

**BOARD AGENDA ITEM**

**July 28, 2020**

***SUBJECT:***

Update Organizational Chart in Policy CCA Organization Chart

***BACKGROUND INFORMATION:***

Policy CCA presents the organizational chart for the district administration beginning with the office of the Superintendent. Policy CC Administrative Organization states that “The chart [Organization Chart] represents the framework for administration and the lines of authority and responsibility. Within the framework established, each school will be encouraged and free to work out the educational program most appropriate for itself.”

***ADMINISTRATIVE CONSIDERATION:***

The proposed change updates Organizational Chart in Policy CCA Organization Chart to reflect the current administrative structure.

***RECOMMENDATION:***

Approve updates to Organizational Chart in Policy CCA Organization Chart

***ATTACHMENTS:***

Policy CCA Organization Chart  
Organizational Chart in Policy CCA Organization Chart

***PREPARED BY:***

Salvatore Minolfo

## **ORGANIZATION CHART**

Code **CCA** Issued **07/20**

---

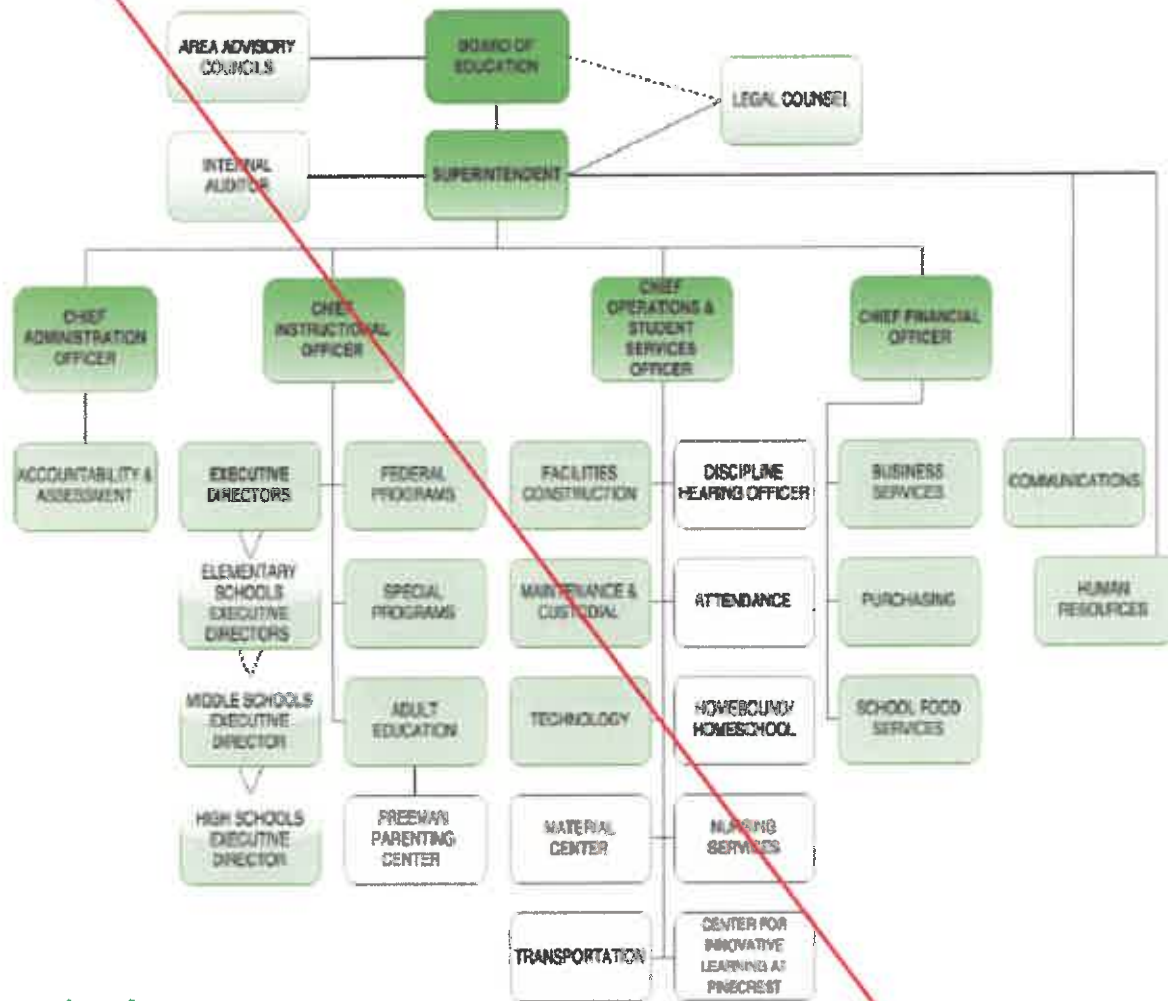
[View or Print Organization Chart.](#)

Issued 10/16

Adopted 09/001; Revised 10/25/16; 07/28/20

# ORGANIZATION CHART

Code **CCA** Issued **10/16**



Adopted 9/01; Revised 10/25/16

The School District of Aiken County

# DISTRICT OFFICE ORG CHART

