



mcmillan | pazdan | smith
ARCHITECTURE

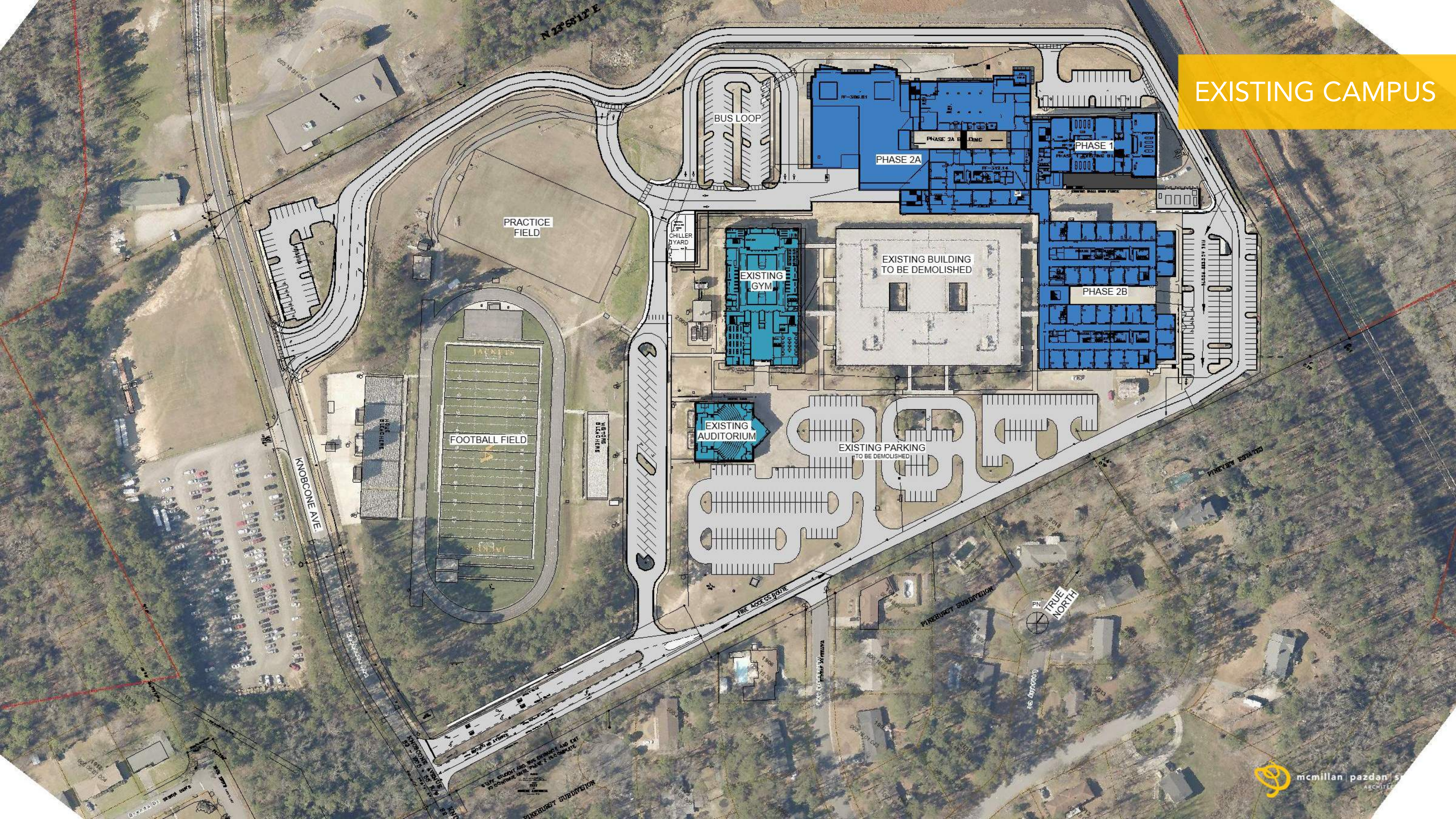
North Augusta High School - Phase 3

Design Development Presentation | August 13, 2019

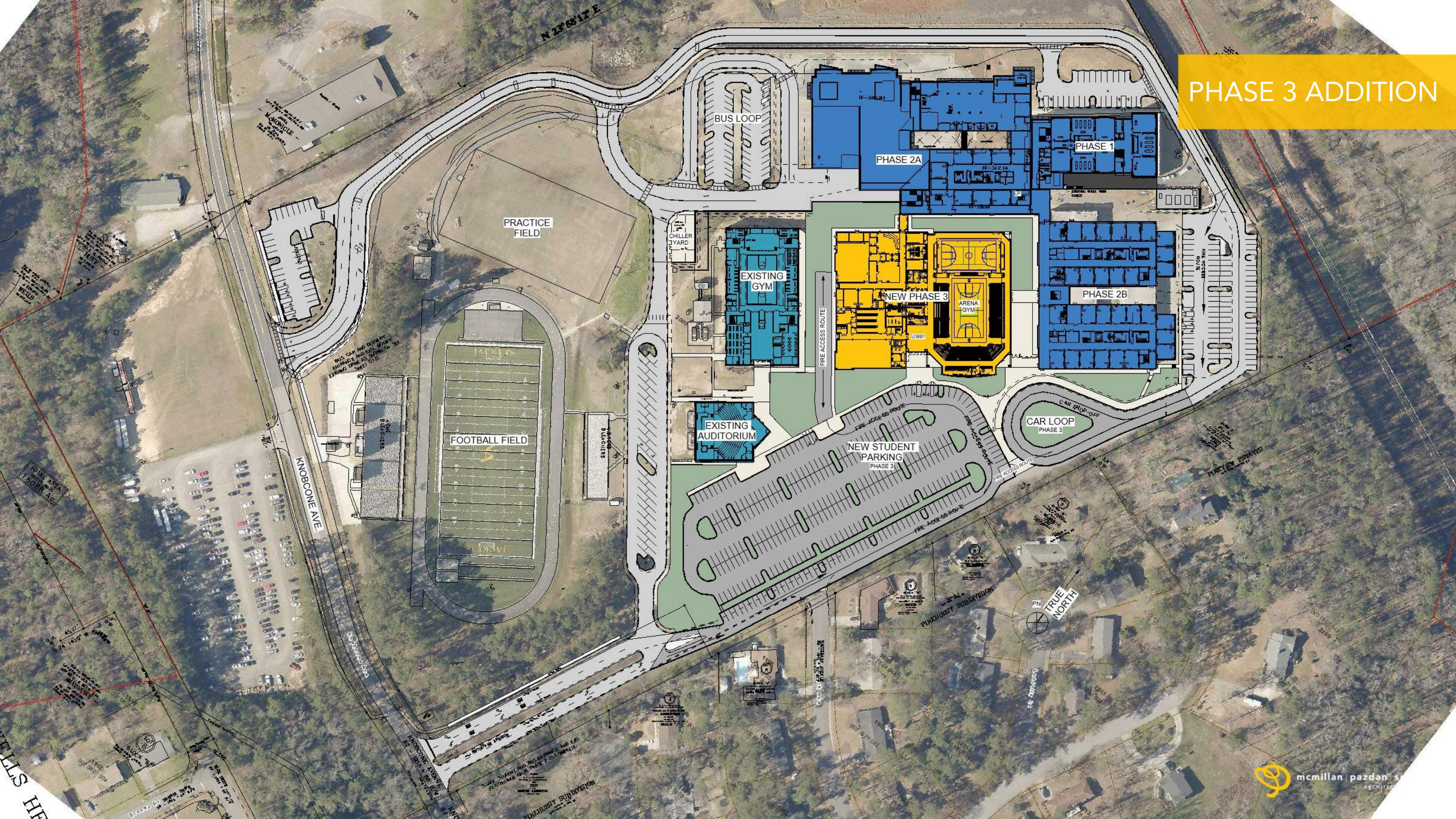


AIKEN COUNTY
PUBLIC SCHOOLS

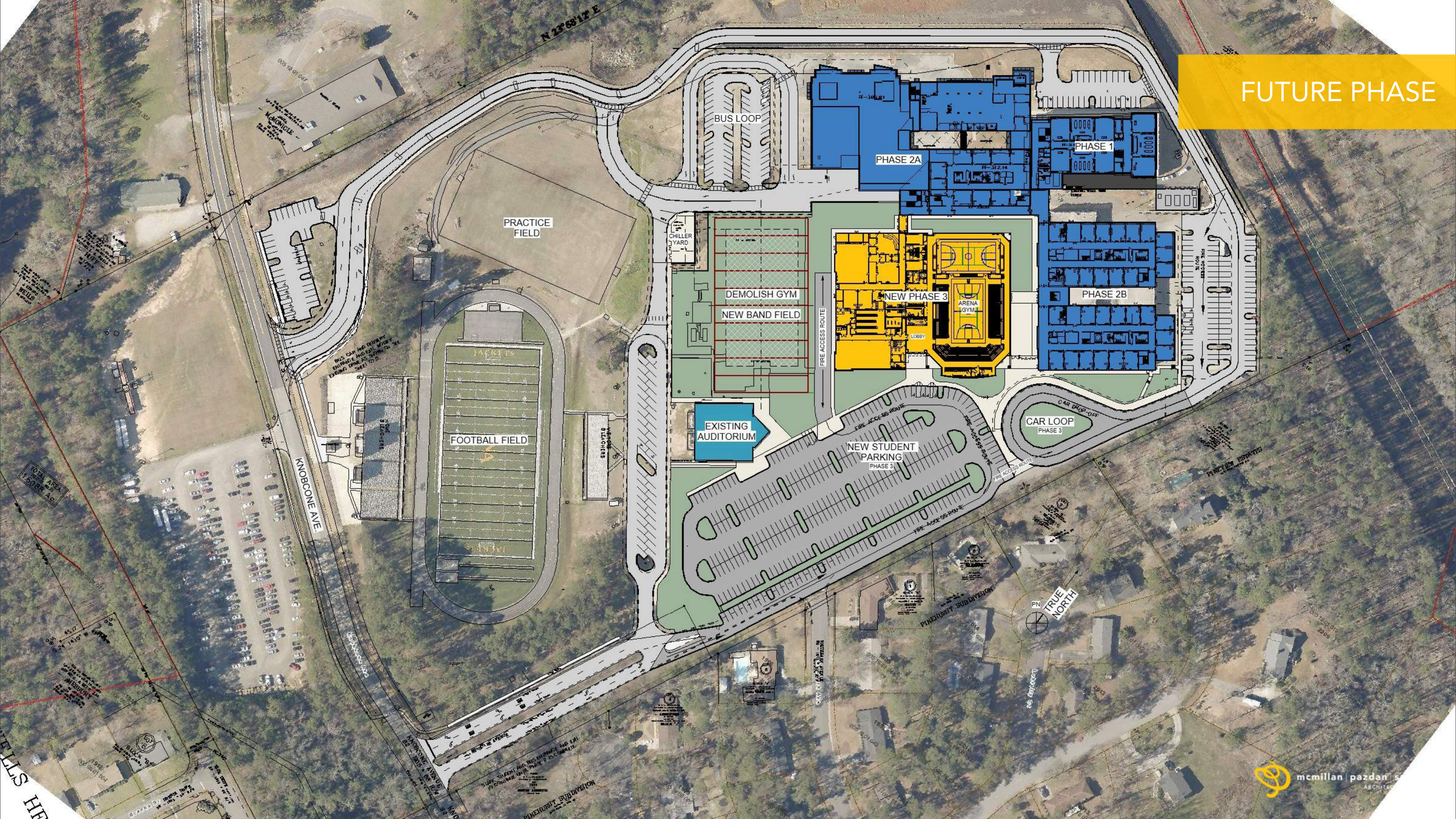
EXISTING CAMPUS



PHASE 3 ADDITION



FUTURE PHASE





DESIGN

PHASE 3 ADDITION FLOOR PLAN



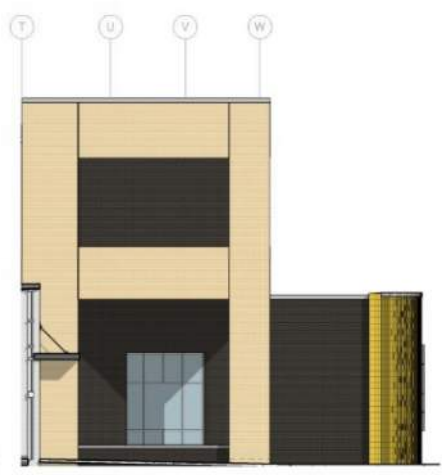
PHASE 3 ADDITION
ELEVATIONS



D1 SOUTH ELEVATION - COLOR
AP300 3/32" = 1'-0"



C1 HIDDEN EAST ELEVATION - COLOR
AP300 3/32" = 1'-0"



C2 HIDDEN WEST ELEVATION - COLOR
AP300 3/32" = 1'-0"



C3 EAST ELEVATION - COLOR
AP300 3/32" = 1'-0"

PHASE 3 ADDITION
ELEVATIONS



B1
AP300 3/32" = 1'-0"

NORTH ELEVATION - COLOR



A1
AP300 3/32" = 1'-0"

WEST ELEVATION - COLOR

PHASE 3 ADDITION



PHASE 3
ARENA ENTRY



PHASE 3
BAND ROOM INTERIOR



PHASE 3
CHORUS INTERIOR



PHASE 3
ARENA LOBBY INTERIOR



PHASE 3
ARENA INTERIOR



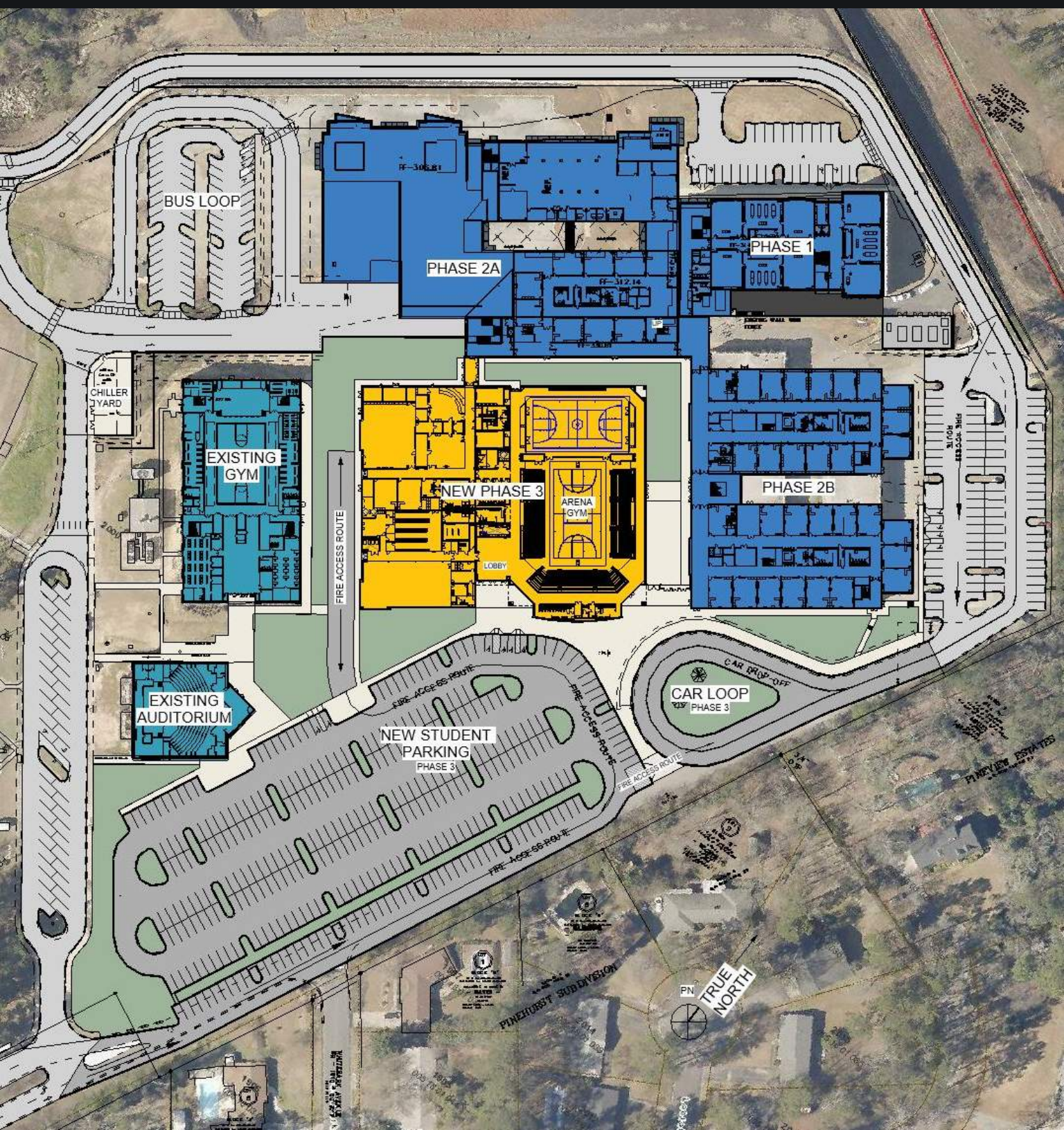
PHASE 3
ARENA INTERIOR





BUDGET

DESIGN DEVELOPMENT BUDGET



Construction Costs

Site Development	=	\$ 1,115,000
New Building	=	\$ 15,510,500

Probable Base Bid	=	\$ 16,625,500
-------------------	---	---------------

Design Contingency	=	\$ 0
--------------------	---	------

Soft Costs

- | | |
|--------------------------------|--------------------|
| - Geotechnical Engineering | - Site Surveys |
| - A/E Professional Design Fees | - FFE |
| - Testing and Inspections | - Data/Security/IT |

Estimated Soft Costs	=	\$ 4,200,000
----------------------	---	--------------

Probable Base Bid + Soft Costs	=	\$ 20,825,500
--------------------------------	---	---------------

Owner Contingency	=	\$ 500,000
-------------------	---	------------

Probable Base Bid + Soft Costs + Contingency	=	\$ 21,325,500
---	---	---------------

THANK YOU



mcmillan | pazdan | smith
ARCHITECTURE

ideas taking shape