



# PHASE 2 RENOVATIONS & ADDITIONS TO HAMMOND HILL ELEMENTARY SCHOOL

EXECUTIVE SUMMARY REPORT  
MARCH 2023



# HAMMOND HILL ELEMENTARY SCHOOL RENOVATIONS AND ADDITIONS

---

## PHASE 2 CONSTRUCTION:

- Completion of site work and new driveway is still hindered by the recent rains. Warmer weather is starting to dry out the site to allow work to progress soon. Reworking of driveway at the east side of the property has started.
- Fencing has been installed between the vehicular queuing lanes and the school.
- New fire water line and fire hydrant have been installed along the east property line. Installation of new sidewalk is in progress.
- All roofing work has been completed.
- Installation of retractable stage in the cafeteria has been completed. New projection screen has also been installed.
- Sound panels have been installed and painted in the cafeteria.
- Installation of light fixtures has been completed in all areas except for the cafeteria. Work is still in progress.
- Installation of all new kitchen equipment is nearing completion.
- All plumbing fixtures have been set and toilet partitions installed.
- Cabinets have been set in the one classroom.
- Cafeteria tables have been delivered and assembled on site.

## PROJECT SCHEDULE:

Notice to Proceed:	November 16, 2020
Substantial Completion Date Phase 1:	April 15, 2022
Substantial Completion Date Phase 2:	March 24, 2023
Schedule Status:	Project is on schedule.

## PROJECT BUDGET:

Original Contract Sum:	\$15,240,600.00
Net Change by Change Orders:	\$0.00
Contract Sum to Date:	\$15,240,600.00
Total Completed and Stored to Date:	\$14,384,686.00
<b>APPROVED CHANGES:</b>	None



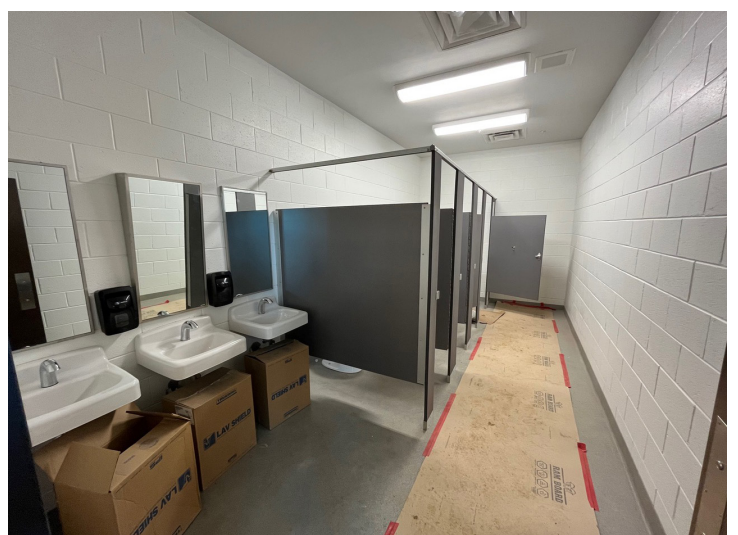
PHASE 2 EXTERIOR CONSTRUCTION PROGRESS



PHASE 2 INTERIOR CONSTRUCTION PROGRESS



RETRACTABLE STAGE & PROJECTION SCREEN  
INSTALLATION COMPLETE



PLUMBING FIXTURES & TOILET PARTITIONS SET



*KITCHEN EQUIPMENT INSTALLATION NEARING COMPLETION.*



*NEW SIDEWALK FROM WOODLAWN AVE.*



*NEW FIRE WATER LINE & FIRE HYDRANT.*



*NEW FENCING BETWEEN SCHOOL & VEHICULAR QUEUING LANES.*



*CAFETERIA TABLES BEING ASSEMBLED.*