

**BOARD AGENDA ITEM**  
**October 11, 2016**

**SUBJECT:**

Changes to Policy CCA Organization Chart

**BACKGROUND:**

School Board Policy CC state in part:

School district administrative organization will follow the pattern outlined in the chart found at CCA in this manual. The chart represents the framework for administration and the lines of authority and responsibility. Within the framework established, each school will be encouraged and free to work out the educational program most appropriate for itself.

The administrative organizational structure of the district accommodates and enhances the attainment of goals and objectives the board has set forth for the schools. The organization must assure that schools effectively and efficiently carry out programs and respond to any new programs demanded by system needs or opportunities. The organization must also allow the schools opportunities to address their particular needs and improve existing programs.

**ADMINISTRATIVE CONSIDERATION:**

The existing organization chart does not represent the board approved changes in the school district structure. The new chart takes into account all of the recommended structural changes.

**RECOMMENDATION:**

Approve the proposed changes on first reading

**ATTACHMENT:**

Policy CCA Organization Chart

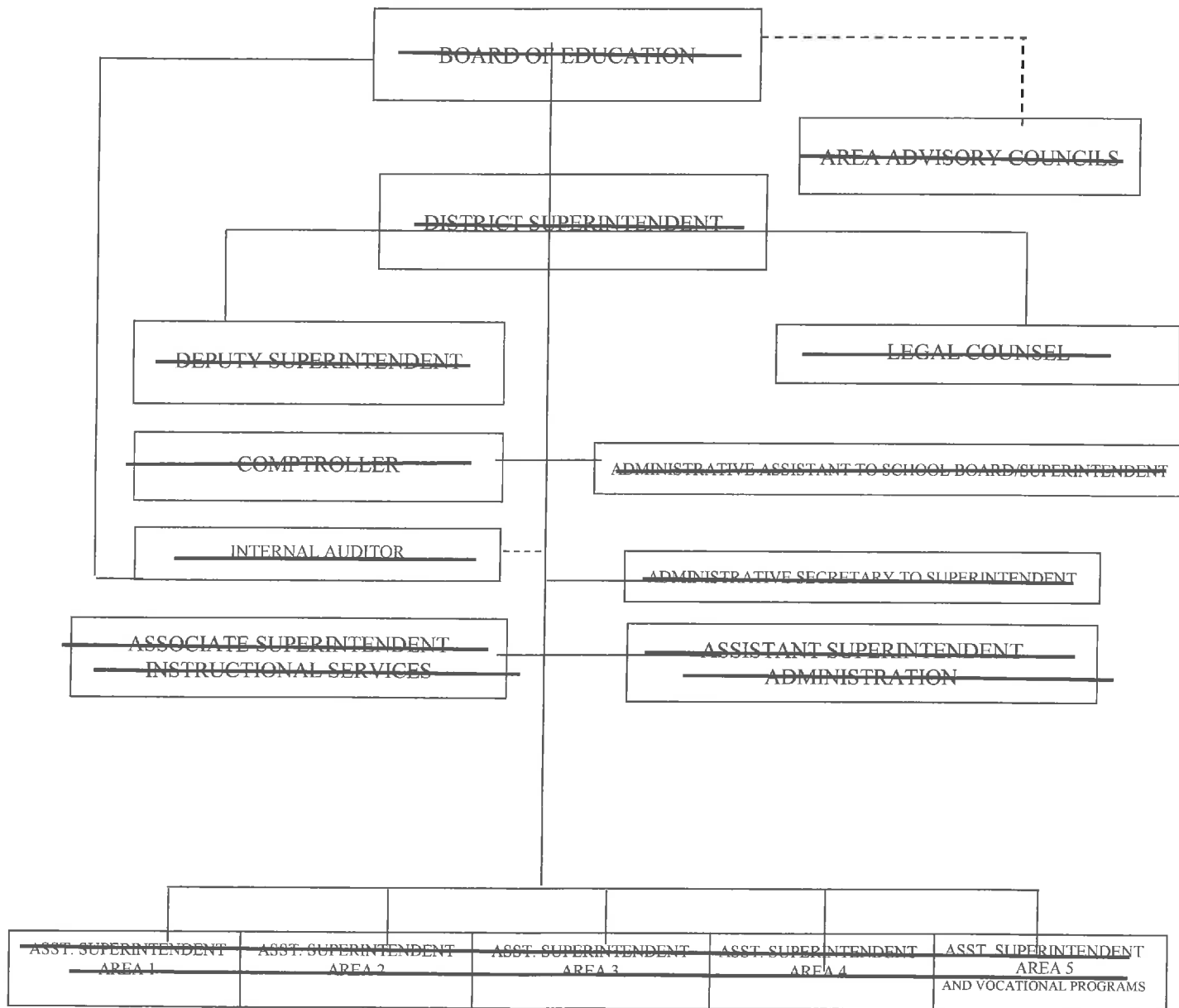
**PREPARED BY:**

King Laurence

# ORGANIZATION CHART

Code **CCA** Issued **9/01**

## ~~ORGANIZATIONAL STRUCTURE~~ ~~AIKEN COUNTY PUBLIC SCHOOLS~~



~~Legend:~~  
 ——— Line Responsibility  
 - - - Advisory Responsibility

# ORGANIZATION CHART

Code **CCA** Issued **9/01**

