

SCHEMATIC DESIGN SUMMARY

AIKEN COUNTY CAREER AND TECHNOLOGY CENTER

06.13.23



AIKEN COUNTY
PUBLIC SCHOOLS



Aiken Technical College

GMC

PROJECT REVIEW

GMC has been given the opportunity to partner with the district to develop the new Aiken County Career and Technology Center. **Since kicking the project off late last year, we have:**

- Worked through the programming process with district and career center staff to determine the needs of the project.
- GMC facilitated a series of workshops to better understand the Career Center and the district's vision for the new building. We worked together to understand your vision, validate those ideas spatially, and then manifest them in the schematic design.
- We have coordinated with Aiken Technical College to determine the site boundaries, site design, and building aesthetics.
- We have coordinated with OSF for site selection and project review.
- We have coordinated with our consultants to further develop the design and to provide a comprehensive Schematic Design pricing package.
- The result of these efforts is a 100,000 SF state-of-the-art Career Center that will house 18 unique programs and is set to open in the summer of 2025.

VISION STATEMENT

PROJECT VISION STATEMENT

The Aiken County Career and Technology Center will be *built to empower, support, and develop the students of Aiken County Public Schools*. The Career Center will *bridge the gap between education and careers*, preparing students to enter the *workforce or college* with a strong foundation and ready to be successful.

The new Career Center will be *built to look and perform like the professional workplace, projecting it's mission not just through its students and staff, but through the architecture*.

The clear and deliberate composition of space will encourage cross curriculum development, collaboration, and community as *clusters of like programs are positioned around a network of open collaborative areas*.

As one moves through and around the building, it will *showcase the programs and the work that occur within it*, while students are trained by industry experts in *authentic workplace inspired environments*.

PROJECT SITE

PROJECT SITE

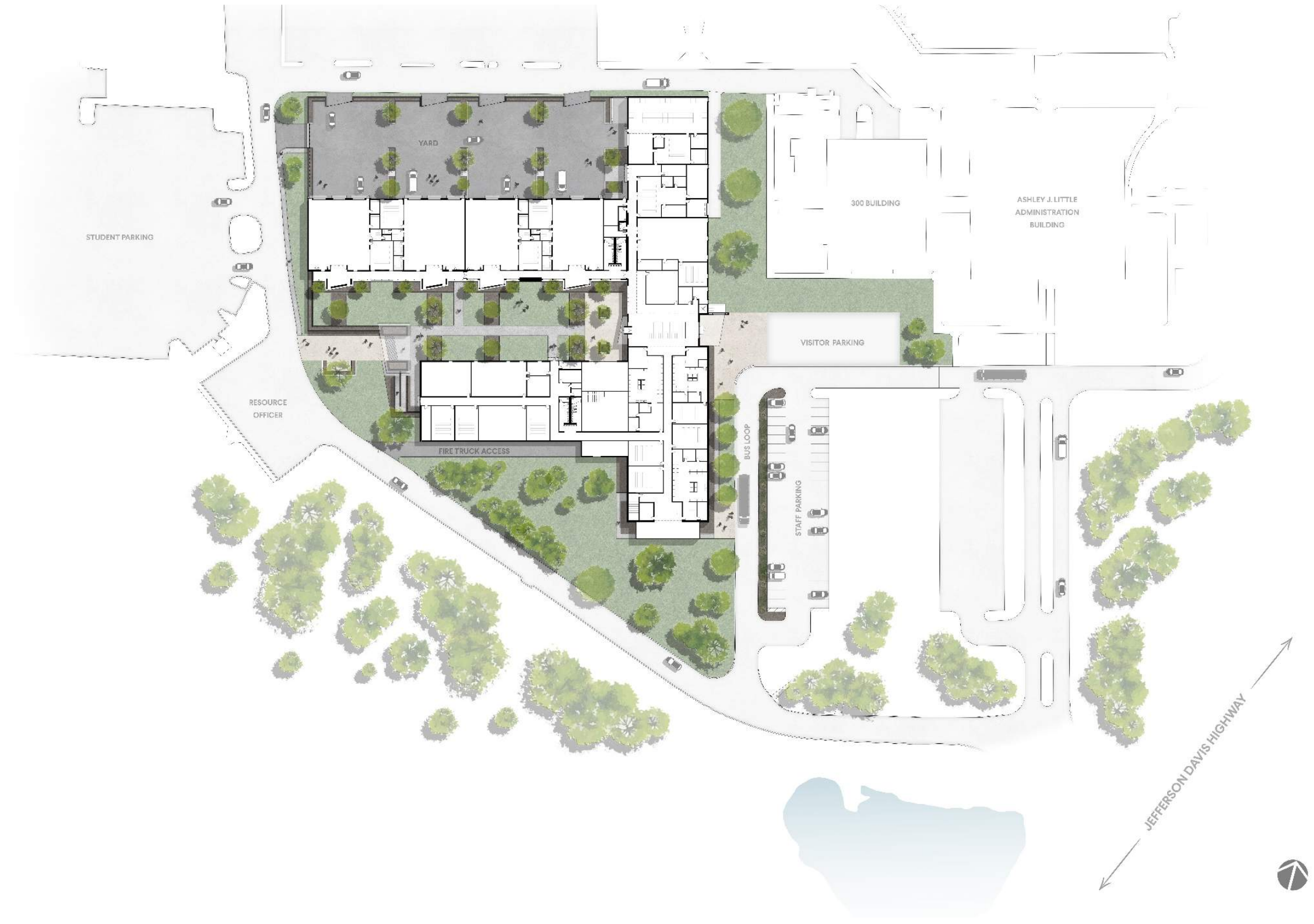


PROJECT SITE



SITE DESIGN

SCHEMATIC SITE PLAN



FLOOR PLANS

FIRST LEVEL PLAN



AREA KEY

- ADMINISTRATION + GUIDANCE
- MEETING ROOM + TESTING
- HEALTH SCIENCES
- CHILD CARE + ARTS
- CIRCULATION
- COMMON STUDENT SPACES
- UTILITY SPACES

PROGRAM KEY

- 1 LARGE MEETING ROOM
- 2 ADMINISTRATION SUITE
- 3 TESTING CENTER + LEARNING LAB
- 4 GUIDANCE SUITE
- 5 CHILD CARE
- 6 DIGITAL ART AND DESIGN
- 7 FASHION DESIGN + APPAREL CONSTRUCTION
- 8 EMS + FIRE MANAGEMENT
- 9 CANTEEN / VENDING

SECOND LEVEL PLAN



AREA KEY

- SHOP SPACES
- COSMETOLOGY + BARBERING
- HEALTH SCIENCES
- CIRCULATION
- COMMON STUDENT SPACES
- UTILITY SPACES

PROGRAM KEY

- 1 DIESEL TECHNOLOGY
- 2 AUTOMOTIVE TECHNOLOGY
- 3 MACHINE TOOL TECHNOLOGY
- 4 MECHATRONICS
- 5 WELDING TECHNOLOGY
- 6 LAW ENFORCEMENT SERVICES
- 7 ELECTRICITY
- 8 STUDENT COMMON SPACE
- 9 DEPARTMENT CONFERENCE ROOM
- 10 ADMINISTRATION
- 11 COSMETOLOGY
- 12 BARBERING
- 13 BRAIDING
- 14 COSMETOLOGY
- 15 EMS / FIRE MANAGEMENT
- 16 CHANGING ROOM
- 17 BIOMEDICAL SCIENCE
- 18 SPORTS MEDICINE
- 19 HEALTH SCIENCE LAB
- 20 HEALTH SCIENCE CLASSROOM

SCHEMATIC RENDERINGS









AIKEN COUNTY CAREER CENTER









AIKEN COUNTY CAREER CENTER






AIKEN COUNTY CAREER CENTER

BUDGET REVIEW

TOTAL PROJECT BUDGET

AIKEN COUNTY PUBLIC SCHOOLS		 Aiken County Career & Technology Center <small>Achieving Excellence</small>	
ACCTC TOTAL PROJECT BUDGET WORKSHEET - SCHEMATIC DESIGN			
06.13.23			
SCHEMATIC DESIGN			
HARD / CONSTRUCTION COSTS			
Building Construction			
New Construction	\$		39,842,752
Construction Sub-Total	\$		39,842,752
Design Contingency	\$		1,992,138
TOTAL HARD / CONSTRUCTION COSTS	\$		41,834,890
SOFT COSTS			
Moving Expenses			
FFE - Furniture and Equipment			
IT / Security (TV's, Smartboards, Computers, Cameras)			
A/E Basic Services Professional Fees			
A/E Add Services (Landscape, Cost Estimating, Furniture Design and Procurement)			
Design Team Reimbursables (mileage, travel, printing, etc)			
Survey			
Geotechnical Report			
Phase 1 Environmental Site Assessment			
Testing and Special Inspections			
TOTAL SOFT COSTS	\$		7,409,357
SUB-TOTAL	\$		49,244,247
Owner Contingency	\$		1,255,047
SUB-TOTAL	\$		50,499,293
Escalation Contingency (midpoint of construction September 2024)	\$		2,524,965
Total	\$		53,024,258

QUESTIONS?

SCHEMATIC DESIGN SUMMARY

AIKEN COUNTY CAREER AND TECHNOLOGY CENTER

06.13.23



AIKEN COUNTY
PUBLIC SCHOOLS



Aiken Technical College

GMC