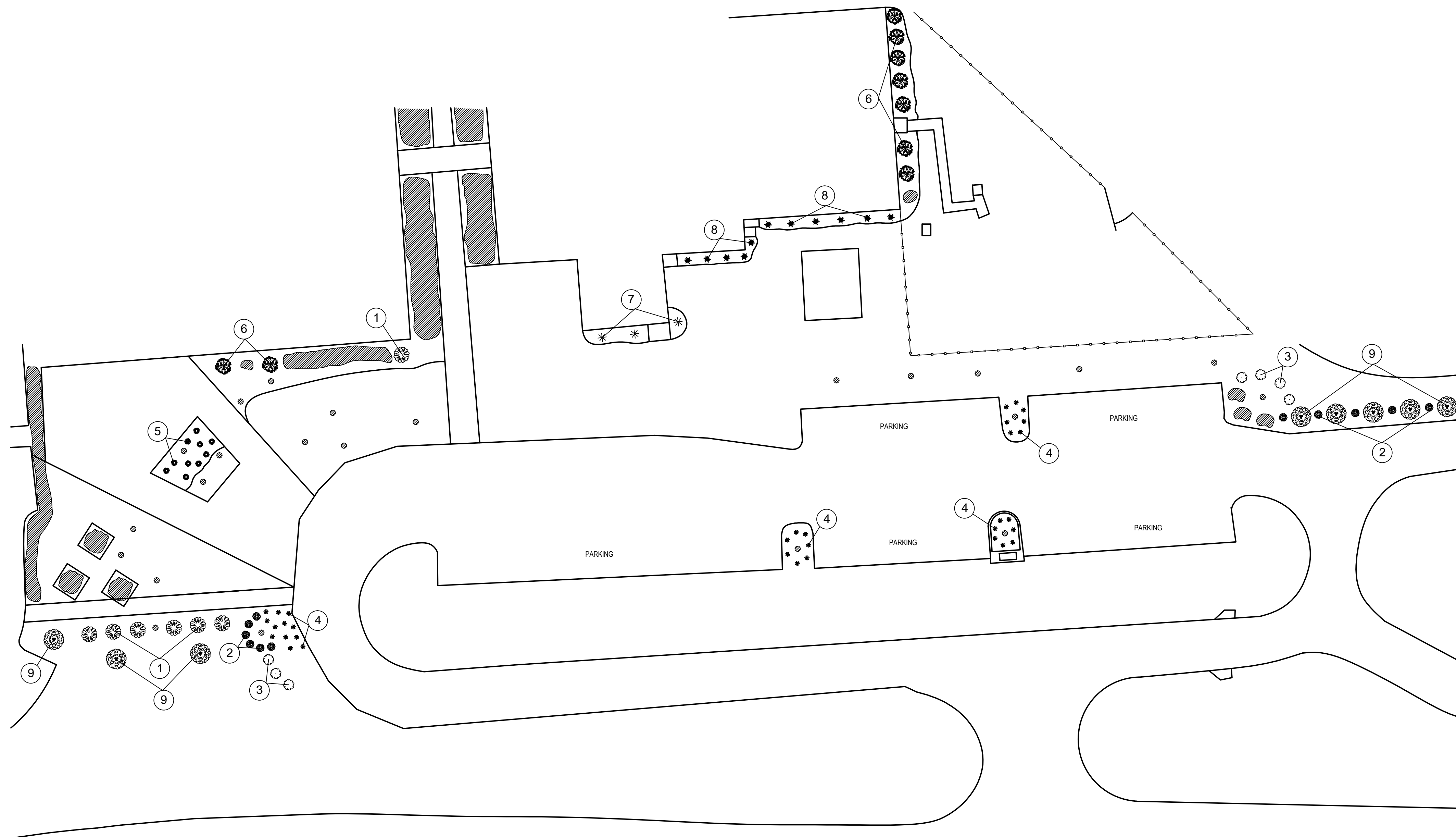


CHUKKER CREEK ELEMENTARY SCHOOL



PLANT KEY			
KEY	QTY.	DESCRIPTION	SIZE
1	7	HOLLY, 'OAKLEAF'	30 GALLON
2	12	LOROPETALUM	7 GALLON
3	7	LIGUSTRUM	10 GALLON
4	33	MUHLI GRASS	3 GALLON
5	10	LIRIOPE	1 GALLON
6	9	TEA OLIVE	10 GALLON
7	3	HOLLY, 'SKY PENCIL'	7 GALLON
8	11	HOLLY, 'SOFT TOUCH'	7 GALLON
9	8	CRAPE MYRTLE	25 GALLON

LEGEND

 Existing Plant Features

SCALE: 1"=30'
DATE: 10-8-2015