

THE NEW LEAVELLE MCCAMPBELL MIDDLE SCHOOL

EXECUTIVE SUMMARY REPORT



**mcmillan
pazdan
smith**
ARCHITECTURE

August 2016

THE NEW LEAVELLE MCCAMPBELL MIDDLE SCHOOL

SITE PACKAGE

ACTIVITIES COMPLETE:

- All site work is substantially complete.

PROJECT SCHEDULE:

Substantial Completion Date: February 1, 2016

APPLICATIONS FOR PAYMENT:

Original Contract Sum: \$3,123,506.00

Net Change by Change Order: \$0

Contract Sum to Date: \$3,123,506.00

Amount Paid to Date: \$1,821,781.00

REQUESTS FOR CHANGE ORDER APPROVED THIS MONTH:

There have been no requests for change order approved this month.



THE NEW LEAVELLE MCCAMPBELL MIDDLE SCHOOL

BUILDING PACKAGE

ACTIVITIES CURRENTLY UNDERWAY:

- Insulation/Vapor Barrier
- Brick Veneer
- Steel Erection
- Mechanical /Electrical/Plumbing

ACTIVITIES COMPLETE:

- Footings
- Underground Utilities
- Floor slabs
- CMU walls

PROJECT SCHEDULE:

Substantial Completion Date: June 1, 2017

APPLICATIONS FOR PAYMENT:

Original Contract Sum: \$19,238,883.00

Net Change by Change Order: \$0

Contract Sum to Date: \$19,238,883.00

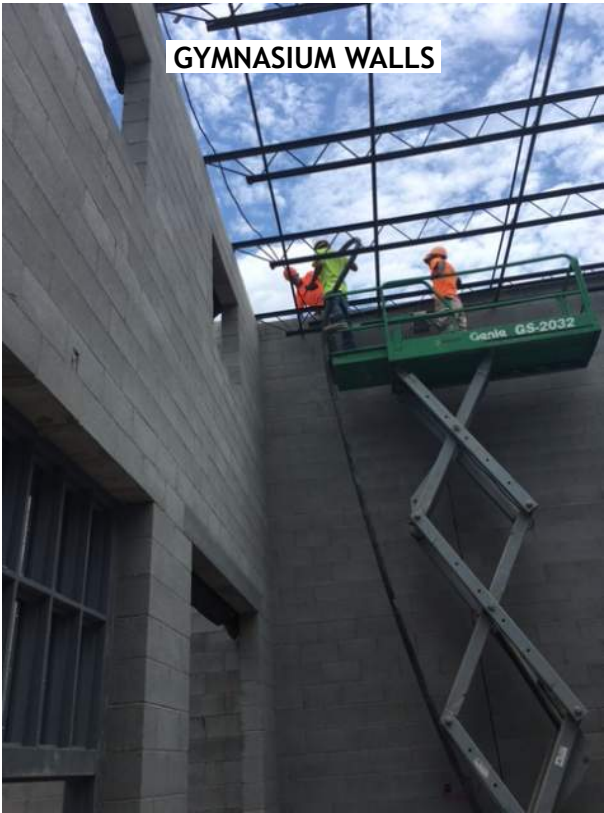
Amount Paid to Date: \$4,726,050.00

REQUESTS FOR CHANGE ORDER APPROVED THIS MONTH:

There have been no requests for change order approved this month.



BUILDING PROGRESS PHOTOS:



GYMNASIUM WALLS



METAL ROOF DECK AT CAFETERIA



JOIST AND DECKING IN CAFETERIA



MASONRY VENEER



BUILDING PROGRESS PHOTOS:

